

Training of Forest Personnel (Himachal Pradesh) for Population estimation of Rhesus Macaques



भारतीय वन्यजीव संस्थान
Wildlife Institute of India

Preface

The objective of this training manual is to communicate field-friendly standardized data collection protocols for the front line staff and officers of the forest department.

- Line transect methodology - Prashant
- Data sheets and allied discussions – Uddalak
- Use of instruments and locus app – Sayli
- Field Training and assistance during presentation – Dr. Sarvesh, Mariyam, Souritra, Harshita and Amritesh

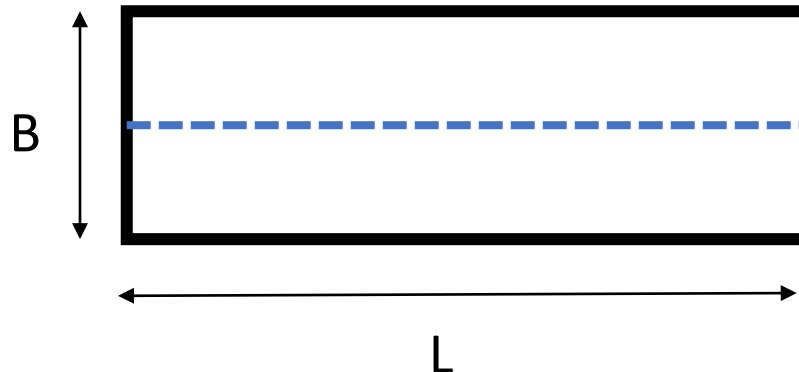
POPULATION ESTIMATION OF RHESUS MACAQUES

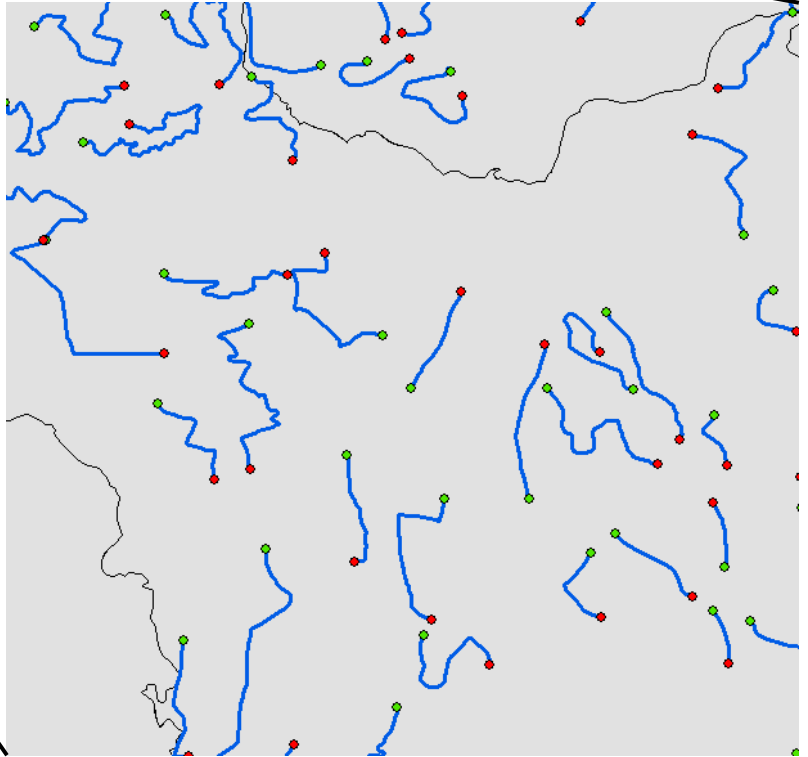
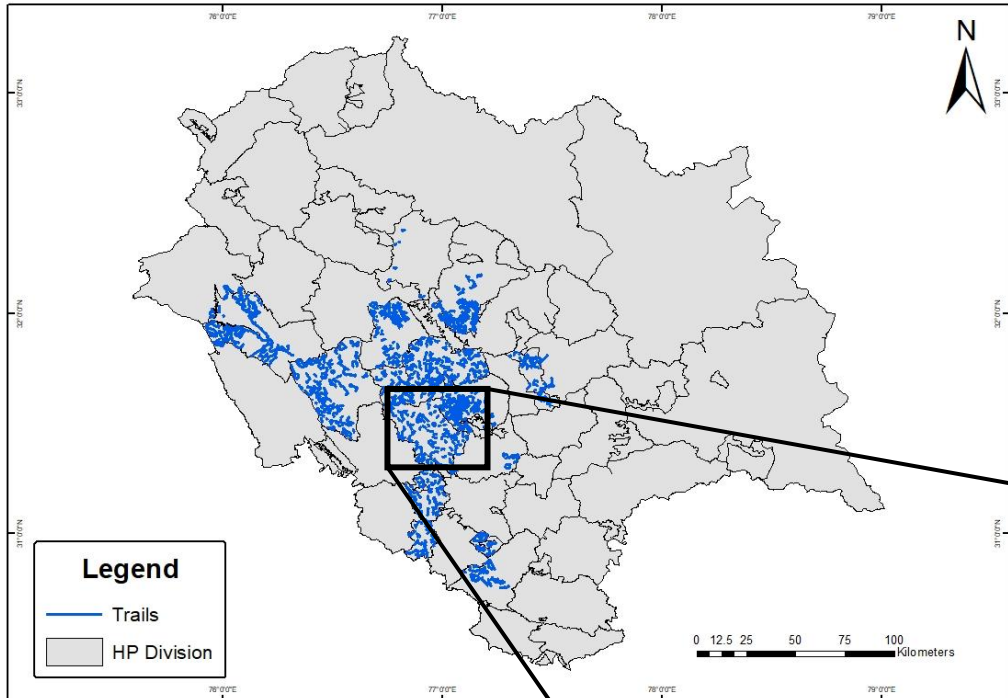


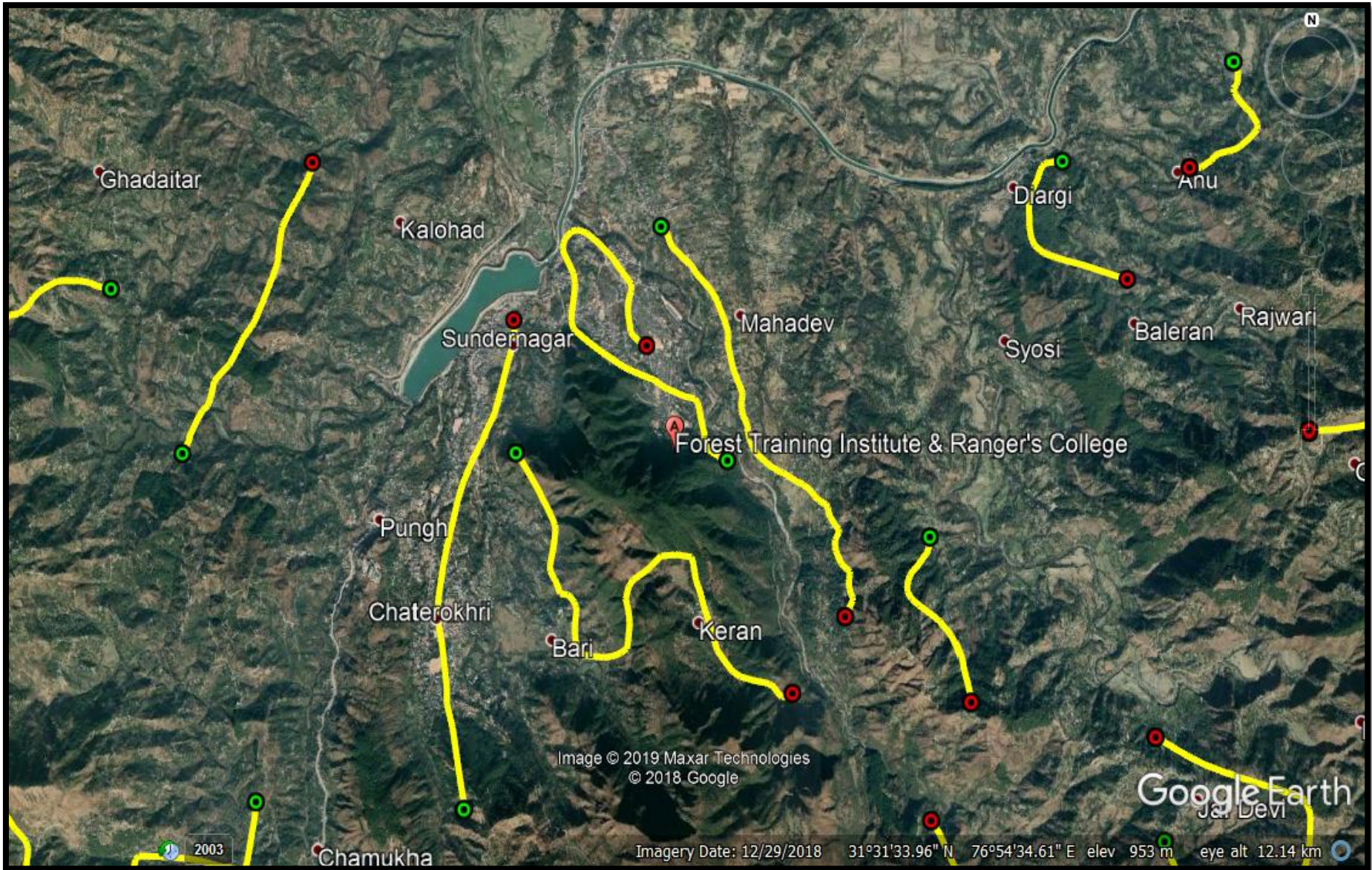
भारतीय वन्यजीव संस्थान
Wildlife Institute of India

Introduction

- Line transect as a simple method to estimate population in an area.
- Beat in forests, village boundary, and block in cities as the basic sampling unit.
- Identifying 2-3 trails in each of these basic units.





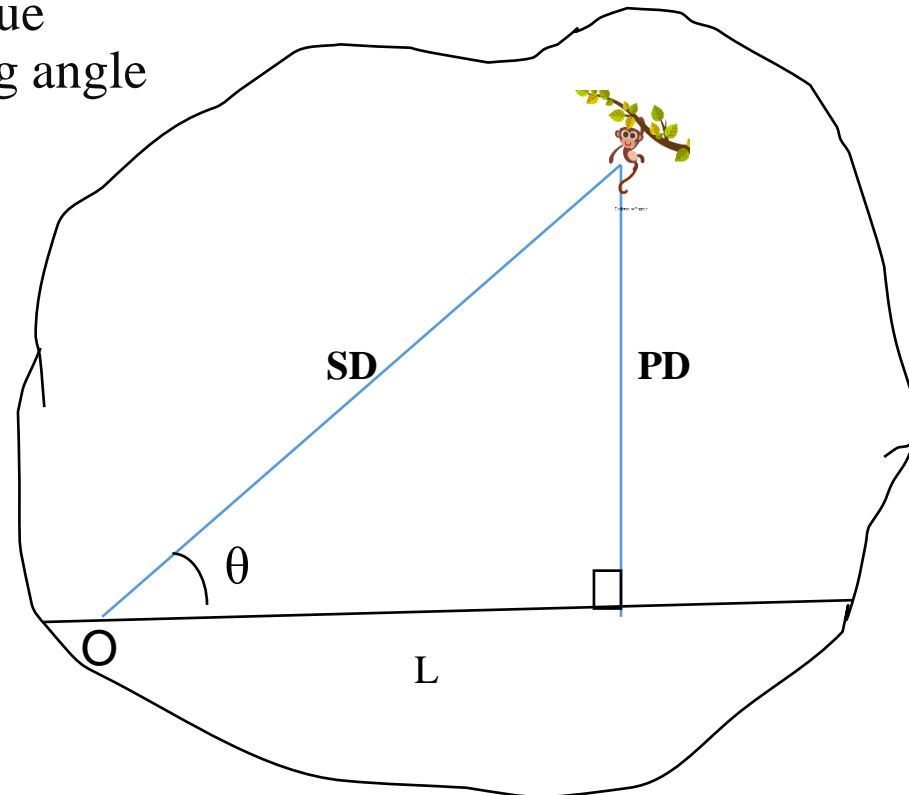
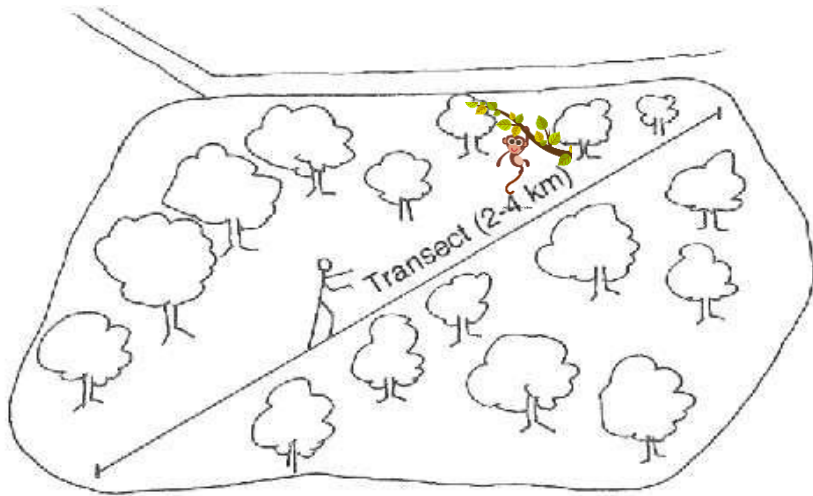


What is Line Transect ?

A line transect involves an observer moving along a predetermined route through the study area, recording the distances at which animals (individual/group) are seen.

PD= Perpendicular Distance
SD= Sighting Distance
O= Observer

L= Transect Line
 = Macaque
 θ = sighting angle



Calculating Density

$$D = \frac{N \times \bar{X}}{\sum l_i \times 2(W_{\max} \times \beta)}$$

X Area of region

N = number of groups

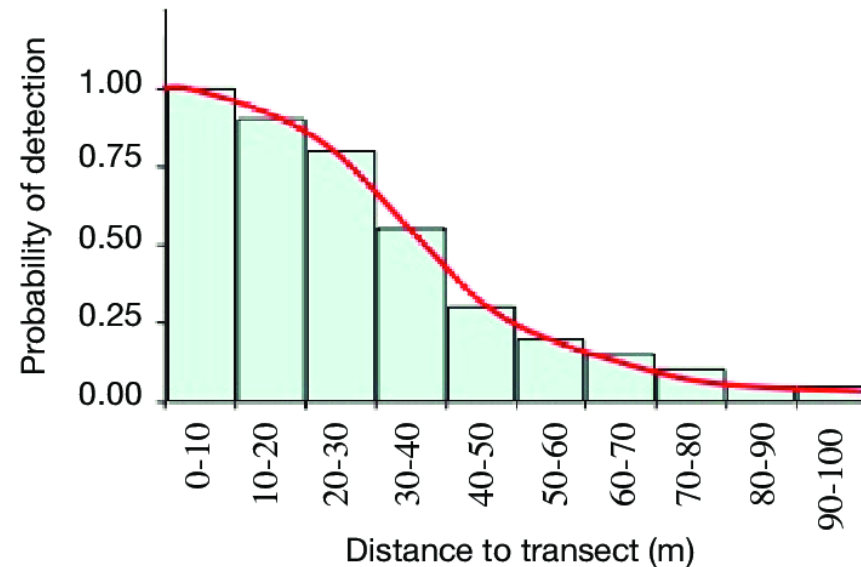
\bar{X} = mean group size

$\sum l_i$ = summation of the transect length

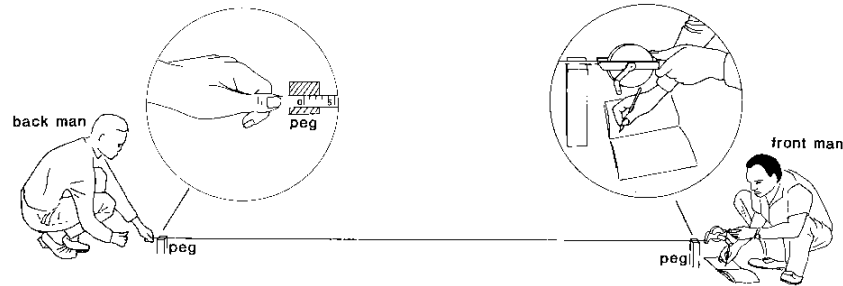
W_{\max} = maximum width up to which animals are recorded

β = detection probability

$(W_{\max} \times \beta)$ = effective width strip



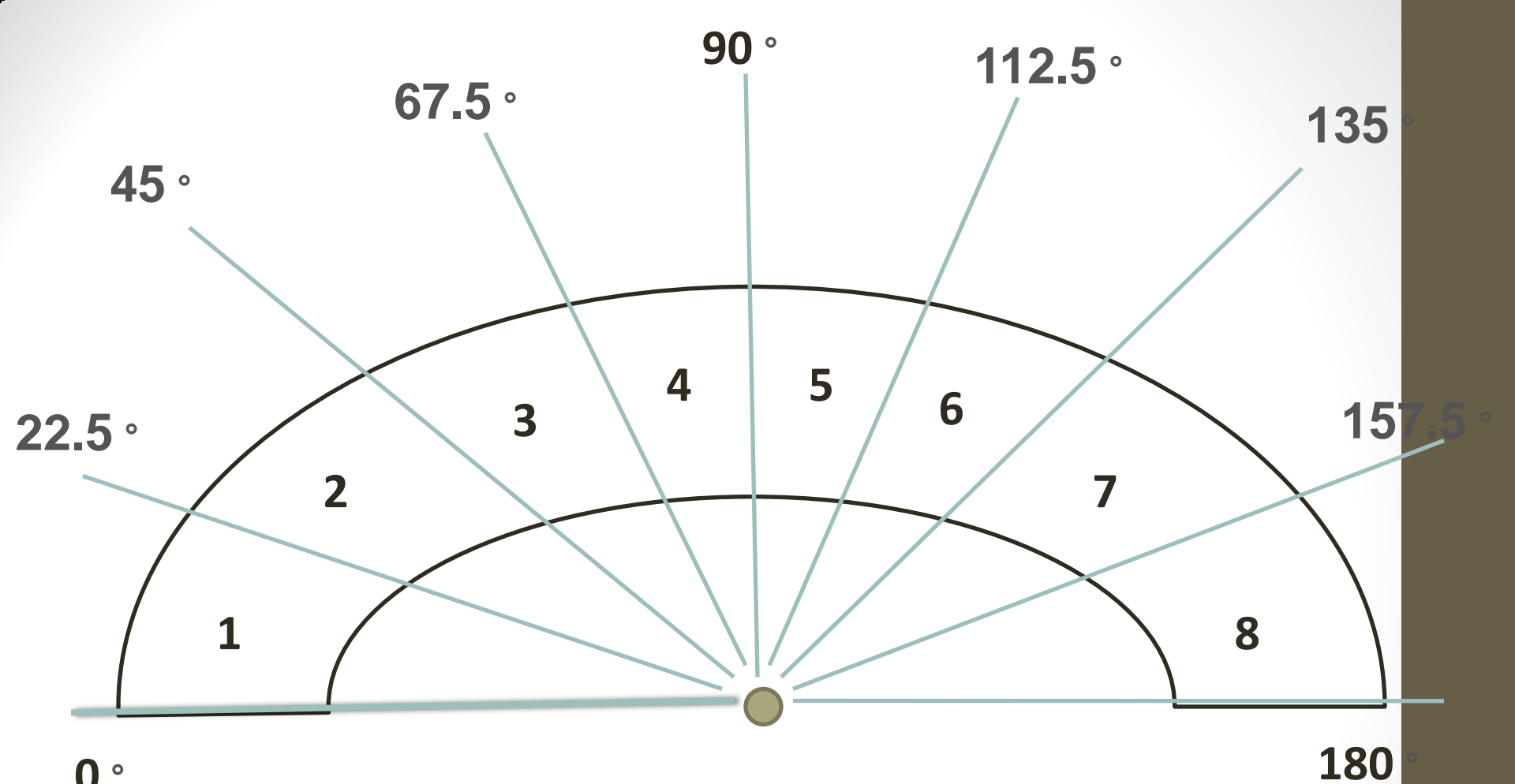
Instruments used in line transect



Compass for estimating bearing

- Compasses are designed for determining angle or bearing or any object relative to true North.
- This will be used to measure walk bearing and animal bearing.





Macaque Position and Bearing without compass or smartphone

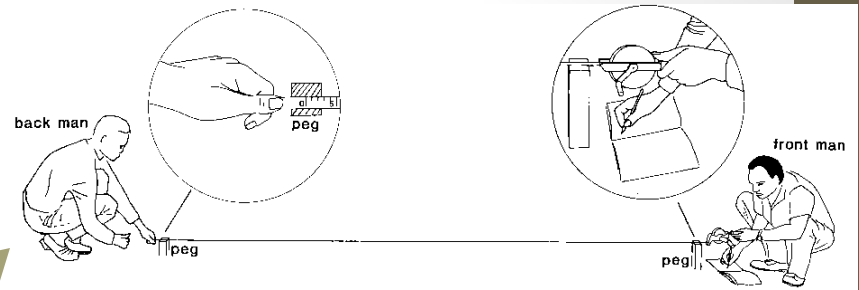
Rangefinder

- A rangefinder is a device that measures distance from the observer to a target, in a process called ranging.
- This will be used to measure distance of animal from observer.



Ocular estimation

- Distance is estimated visually on the basis of previously marked accurate distances



DATASHEET 1d: Estimating distance through ocular method

Observer name:

- This is for observers who do not have rangefinders

Before training

Date:

| S.No. | Distance estimated | Actual distance |
|-------|--------------------|-----------------|
| | | |
| | | |
| | | |
| | | |
| | | |
| | | |
| | | |
| | | |
| | | |
| | | |
| | | |

After training

Date:

| S.No. | Distance estimated | Actual distance |
|-------|--------------------|-----------------|
| | | |
| | | |
| | | |
| | | |
| | | |
| | | |
| | | |
| | | |
| | | |
| | | |
| | | |

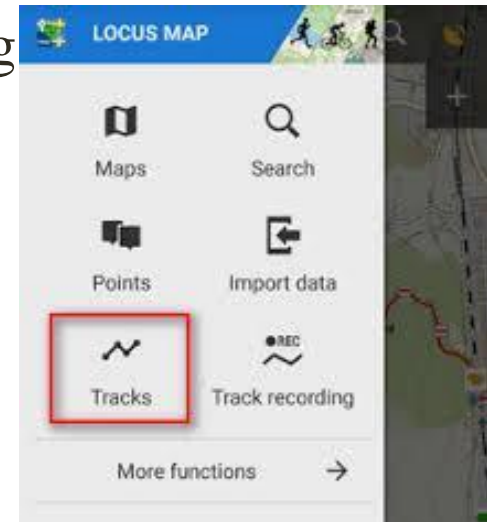
After completion of all trail walks

Date:

| S.No. | Distance estimated | Actual distance |
|-------|--------------------|-----------------|
| | | |
| | | |
| | | |
| | | |
| | | |
| | | |
| | | |
| | | |
| | | |
| | | |
| | | |

Locus-Navigation app

- **Locus Map** is a multi-functional Android navigation app adding advanced online and offline GPS capabilities to Android devices.
- This will be used for mapping trails, recording waypoints, and sharing this data through email.
- The biggest advantage of this app is that it does not require internet connection for functioning
- Location sharing must be kept on whenever Locus is used.



- Download Locus application on your phone through the Play Store.
- Open Locus, go to Settings, and make sure that Latitude and Longitude are in degree decimals for e.g. 30.228221 and 77.82341, and not in degree-minutes-seconds.
- If shape files are available, you can import shape files of study area in Locus. For importing .kml or .kmz files, go to import files->import from dropbox->select required files-> import->files will load in Locus. This step is not compulsory.
- Before starting to walk the trail, open Locus -> Tracks ->Track recording-> click on start icon->start walking your trail->click on stop icon after trail ends->Track will be recorded in your phone-> save the track by trail ID_beat/block.

- Every 5 mins while walking the trail, create a waypoint as follows. In Locus->go to points->create new point->save as “trailID_beat/block_waypointnum” to the point->save point
- In order to share trails and waypoints files->Go to menu->click on share icon-> select the files->share via email-> type the respective email id -> share
- All saved tracks and points are automatically stored as .gpx files, and can be shared via email.
- These .gpx files can be then imported in to Google Earth for mapping and further analysis
- Make sure your phone screen is not switched off otherwise locus will stop track recording

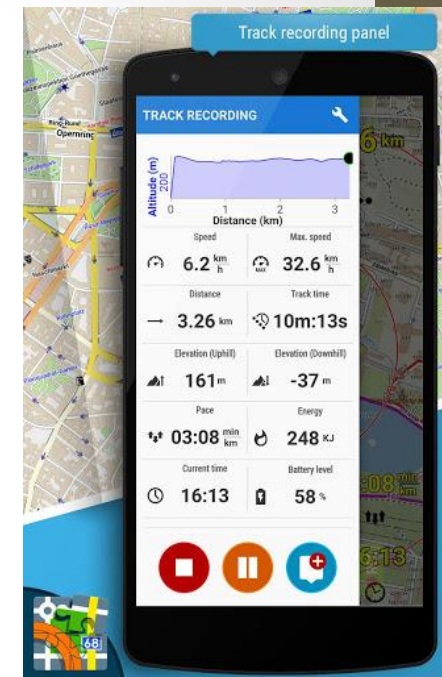


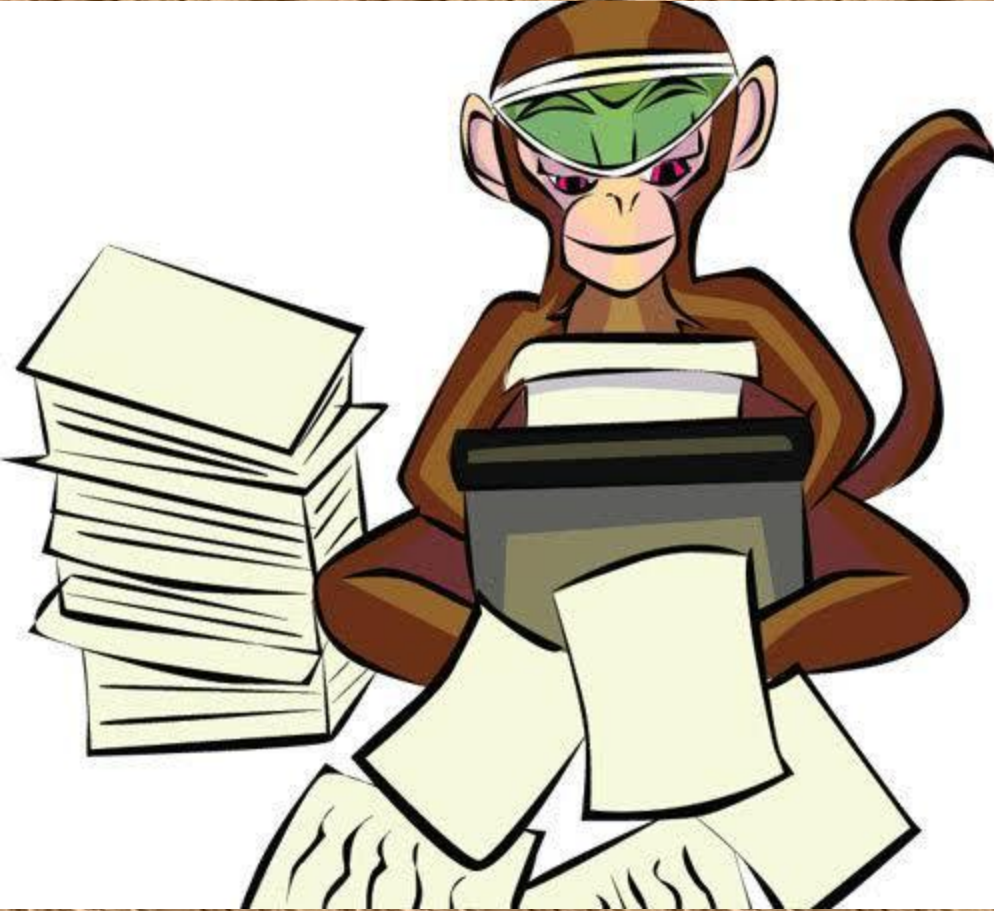
DATASHEET 1c: Waypoints

Date: Observer name: Start Time: End Time:
 Beat/village/block name: Transect ID: Total Length: Km
 Begin GPS: Lat: (N), Long: (E) End GPS: Lat: (N); Long: (E)
 Weather:

| S.No. | Latitude of observer | Longitude of observer |
|-------|----------------------|-----------------------|
| | | |
| | | |
| | | |
| | | |
| | | |
| | | |
| | | |
| | | |
| | | |
| | | |

| S.No. | Latitude of observer | Longitude of observer |
|-------|----------------------|-----------------------|
| | | |
| | | |
| | | |
| | | |
| | | |
| | | |
| | | |
| | | |
| | | |
| | | |





Taming the Datasheets...



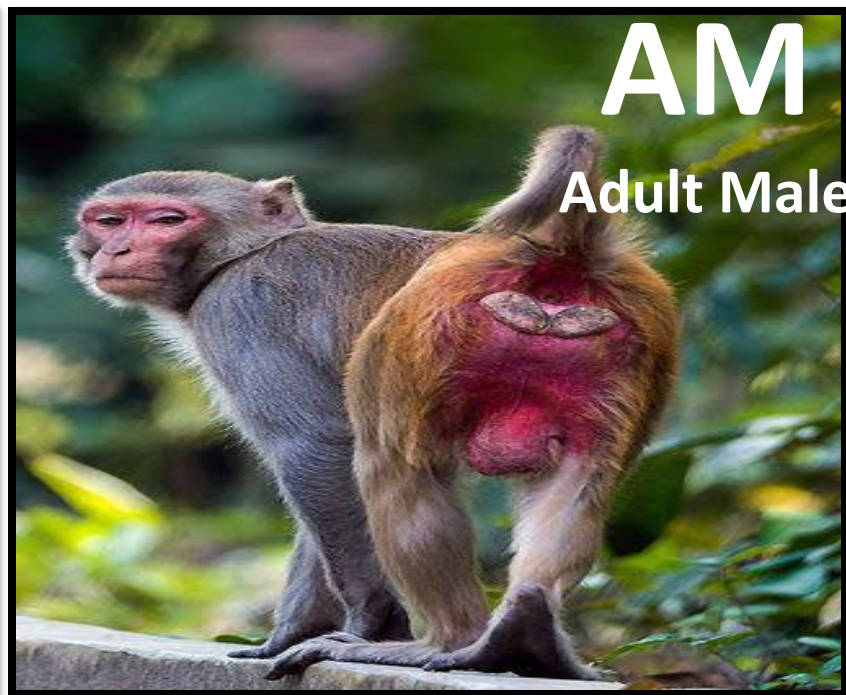
भारतीय वन्यजीव संस्थान
Wildlife Institute of India

Rhesus Age-Sex Class Identification:

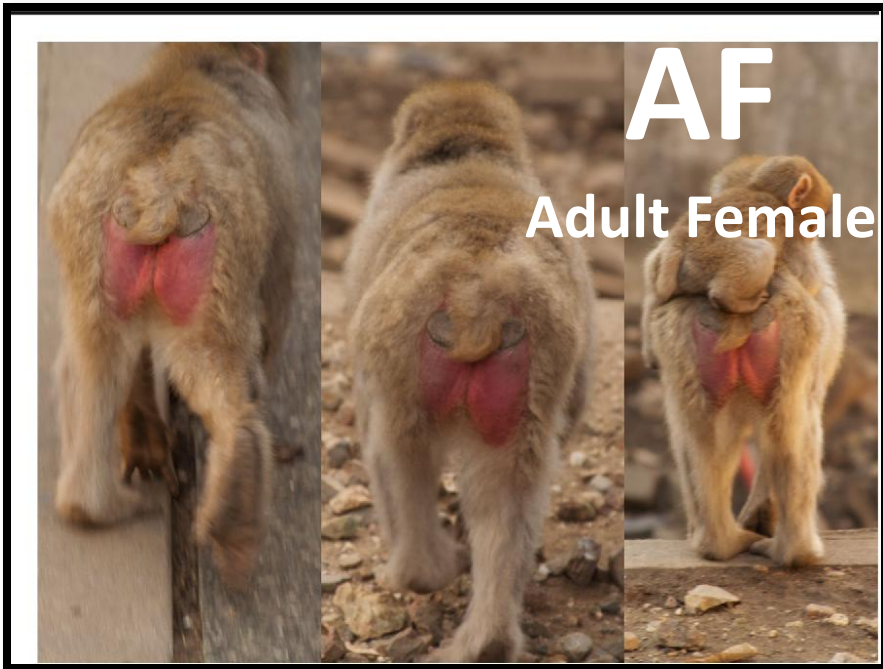
| Age-Sex class | Definition |
|---------------------------------------|--------------------------------------------------------------------------------------------------------------------------|
| Adult Male | Prominent scrotum. |
| Adult Female | Prominent nipples, red anogenital regions. |
| Juvenile (includes sub-adults) | Independent, weaned, larger in size than infants but smaller than adults, lack of red sexual skin in anogenital regions. |
| Infants | Generally dependent upon the mother, unweaned and usually carried by the mother during group progression. |



AM
Adult Male



AM
Adult Male

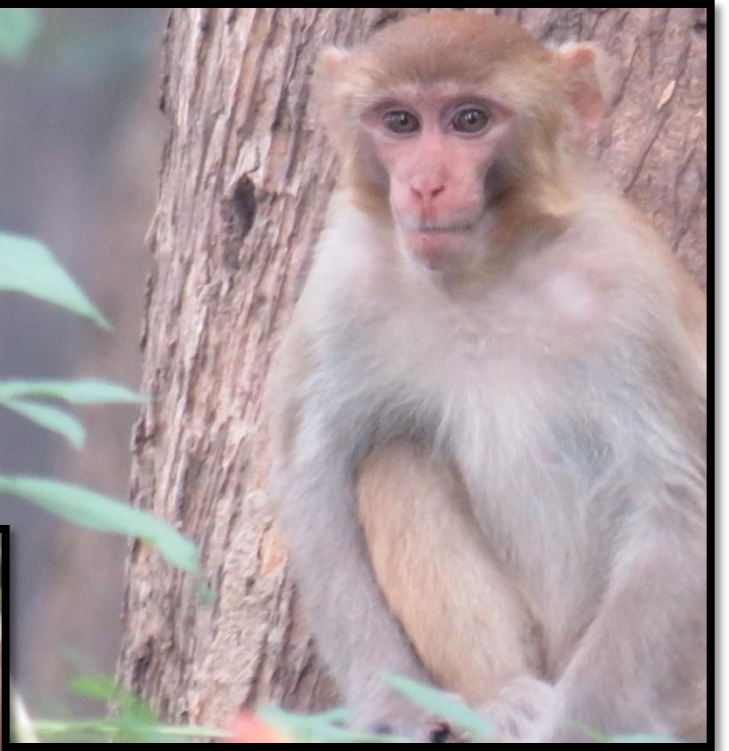


AF
Adult Female



AF
Adult Female

JUV
Juvenile

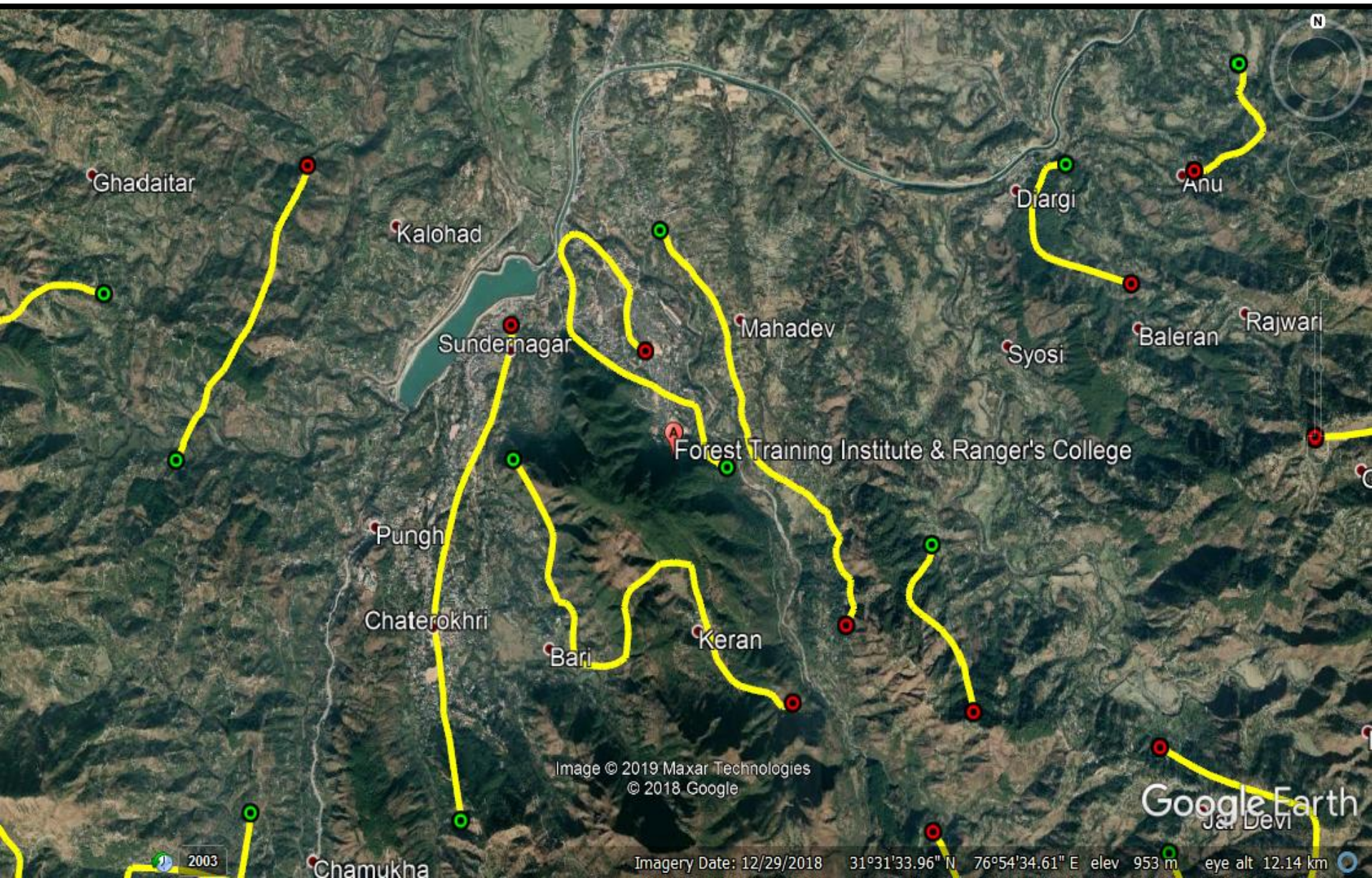


INF
Infant





Trails & Transects...





DATASHEET 2a: Vegetation and habitat status (15 m radius plot)

Date: Observer name:
 Beat/village/block name:
 GPS: Lat: (N), Long: (E)
 Weather:

Start Time: End Time:
 Transect ID: Total Length: KmBegin
 End GPS: Lat: (N); Long: (E)

| Plot | Canopy cover (0 – 100%) | Tree species (descending order of dominance) | | | | | Shrub species (descending order of dominance) | | | | | Shrub abundance (0-absent to 4-high) | Weed/Invasive species (descending order of dominance) | | | Habitat type/Forest terrain |
|------|-------------------------|----------------------------------------------|---|---|---|---|-----------------------------------------------|---|---|---|---|--------------------------------------|-------------------------------------------------------|---|---|-----------------------------|
| | | 1 | 2 | 3 | 4 | 5 | 1 | 2 | 3 | 4 | 5 | | 1 | 2 | 3 | |
| 1 | | | | | | | | | | | | | | | | |
| 2 | | | | | | | | | | | | | | | | |
| 3 | | | | | | | | | | | | | | | | |
| 4 | | | | | | | | | | | | | | | | |
| 5 | | | | | | | | | | | | | | | | |

Tree Canopy Cover...





DATASHEET 3: Human disturbance and macaque interaction

Date: Observer name:

Beat/village/block name:

Are there signs of wood cutting/lopping/grass/other NTFP collection in this beat?

Are there garbage dumps on this beat? Low / Medium / High

Are there signs of loose/scattered garbage on this beat?

How many human settlements/houses are present in this beat?

Do humans willfully feed macaques on this beat/block? Yes/No

Are there temples on this beat/block?.....



... continued

Are there cases of macaque biting/snatching/aggression in this beat? Yes/No

If yes, rate severity of macaque conflict on a scale of 0 (least severe) to 5 (most severe)

How many cases of macaque biting/snatching/aggression are reported per week/month, on average?

Is compensation provided for damage/injuries caused by Rhesus macaques? Yes/No

Have macaques been sterilised in this beat in the last 5 years? Yes/No If yes, how many?.....

Have macaques been shot (legally because of schedule V status) in this beat in the last 5 years? Yes/No If yes, how many?.....

Are there fruiting trees/orchards in this beat? Yes/No If yes, which fruit(s)?.....

